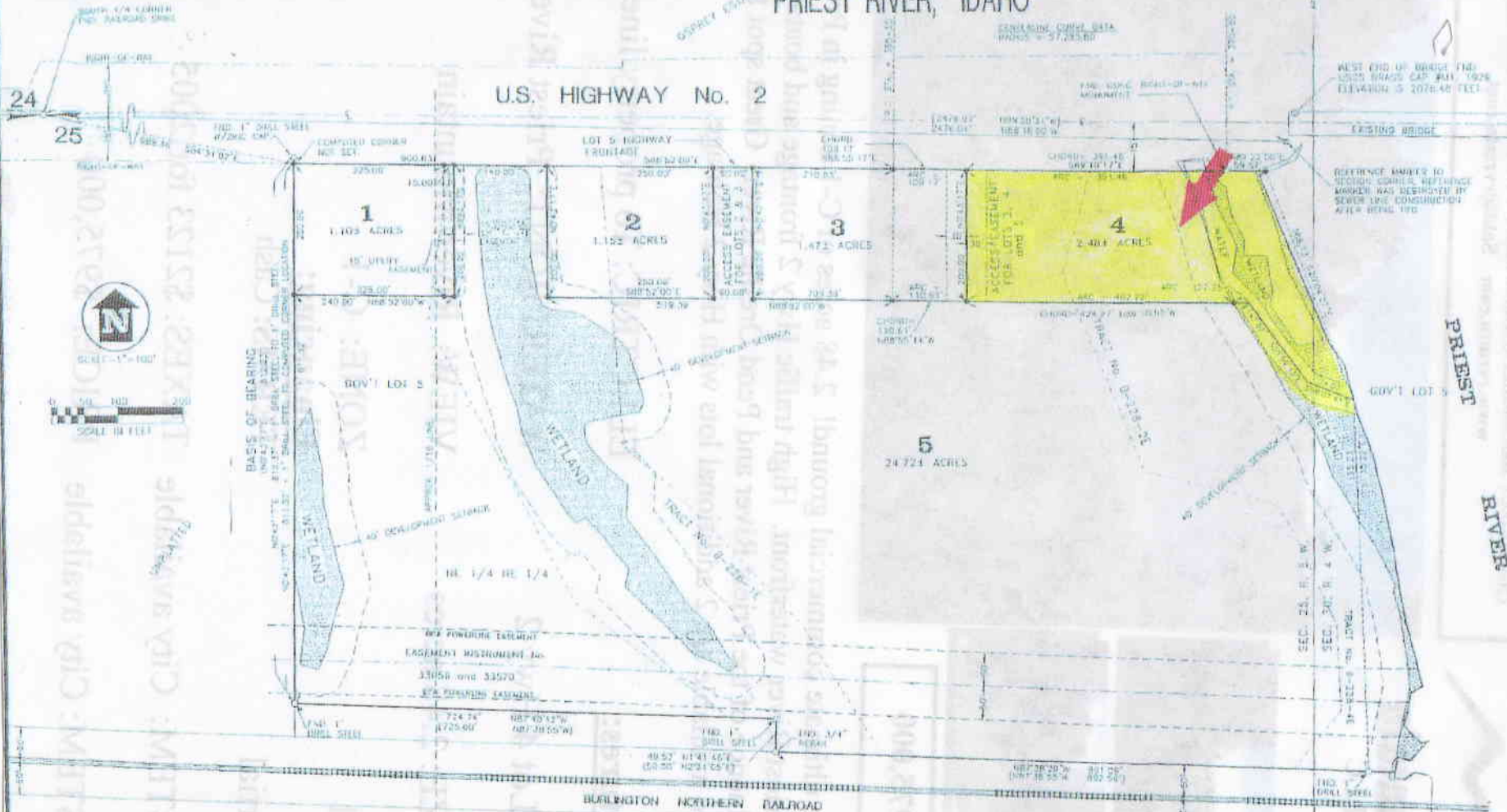


"HIGHWAY 2 ADDITION EAST"

SECTION 25, TWP. 56N., RNG. 5W., B.M.
SECTION 30, TWP. 56N., RNG. 4W., B.M.
PRIEST RIVER, IDAHO



BASIS OF BEARING

BASED ON RECORD OF SURVEY INSTRUMENT No. 504340, AS FILED BY RLS No. 8047 IN BONNER COUNTY, IDAHO ON JUNE 24th, 1985.

SURVEYOR'S NOTE

THIS SURVEY WAS PERFORMED USING A 0 SECOND ANGLE-SWITCH WITH ELECTRONIC DISTANCE MEASUR. THE LINEAR ERRORS OF CLOSURE OF THE RANDOM TRAVERSE, MEETS OR EXCEEDS REQUIREMENTS FOR THE STATE OF IDAHO.

LEGEND

- 2 1/2" BEAR W/ALUMINUM CAP, RLS No. 6019 FOUND CORNER AS NOTED
- FLOWN EASEMENT PER INSTRUMENT No. 42975
- () INFORMATION PER RECORD OF SURVEY INSTRUMENT No. 304340 INFORMATION AS SHOWN ON 'GUSTEY ESTATES', A PLATTED AND RECORDED SUBDIVISION OF BONNER COUNTY, IDAHO.



SECTION 25, 56N, 56E, 5W, 4W, B.M.	SHEET TITLE FINAL PLAT OF "HIGHWAY 2 ADDITION EAST"	DATE 2-28-88
	James A. Sewell and Associates CONSULTING ENGINEERS NEWPORT, WASHINGTON, 99156, (509)447-3626	SCALE 1"=100'
		PROJECT BRI
		DATE OF THIS PLAT FEB-28-1988
		SHEET 2 OF 2